

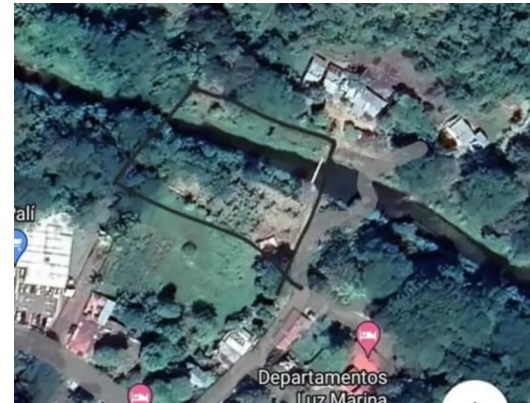
# TOWN LOT BORDERING RIVER - MANY FRUIT TREES - BEGINNING HOUSE CONSTRUCTION

## \$58,000

ID: 20318

📍 Paquera, Puntarenas

Property Type: Land • Size: 804 SQ M •



- Status: Active/Published
- Close To Schools
- Investment Opportunities
- Parking Spaces
- Close To Shops
- Sub Dividable
- Bbq Area
- Close To Transport
- Water Views

## Property Description

A large sized lot in the middle of town but neatly sequestered away by the Guardial River, An abundance of fruit trees of several types, bananas, papayas, and much more. The pad is in for a small house but construction has stopped. This is a perfect homesite, next to the river and quiet but close to town services, all at a low price.

## Additional

- ID 20318
- Active/Published
- View : River
- For Sale
- Land
- \$58,000
- Parking Spaces : 5

Costa Rica Direct: 506 8443 7173

US Number:

Location: 100 meters west of the Ebais San Francisco Coyote, Nandayure, Guanacaste  
Address: 100 metros al oeste de Ebais San Francisco Coyote, Nandayure, Guanacaste



COLDWELL BANKER  
PLAYA COYOTE