

# HUGE PRICE DROP NOW

## \$699,000 Perro Grande

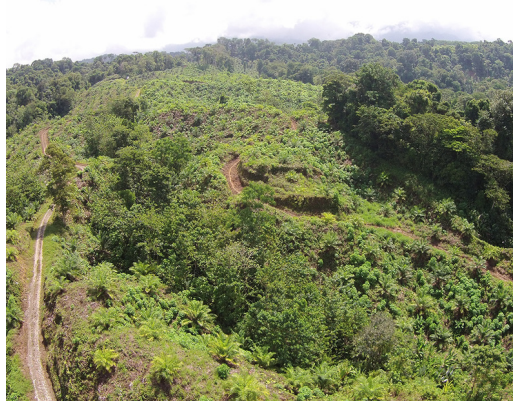
### PALM FARM

# \$699,000

ID:06969

📍 Palmar, Puntarenas

Property Type: Land • Size: 979,910 SQ M •



- Status: Active/Published
- Development Farm
- Investment Opportunities
- Acreage
- Highway Frontage
- Jungle Views
- Commercial
- Income Producing
- Mountain View

## Property Description

Recently Reduced for a quick sale!! This beautiful farm is located in the Osa peninsula. Not far from Piedras Blancas National Park and Corcovado National Park in the town of Chacarita you will find Finca Perro Grande. The Farm is in its fifth year of harvest. Palm is producing at 18 tons per every 2 weeks. Projected to be at 36 tons per month by Dec. 2021. The farm will start its sixth year of palm production in March 2022. Here is the harvest forecast for several years. The trees are healthy and showing great results. All numbers are based on a \$145 per ton rate. The price for palm was down but is now back on a steady climb up. Year 1. Production 3 tons x 40 hecs @ \$145 \$ 17,400 Year 2. Production 6-8 tons x 40 hecs @ \$145 \$ 34,800 - \$ 46,400 Year 3. Production 12-14 tons x 40 @ \$145 \$ 69,900- \$ 81,200 Year 4.

## Additional

- ID 06969
- Active/Published
- For Sale
- Land
- \$699,000
- View : Jungle

Costa Rica Direct: 506 8443 7173

US Number:

Location: 100 meters west of the Ebais San Francisco Coyote, Nandayure, Guanacaste  
Location: 100 metros al oeste de Ebais San Francisco Coyote, Nandayure, Guanacaste